

SITE PLAN FOR PROPOSED 3 BEDROOM HO

DRAFT

VALLEY VIEW

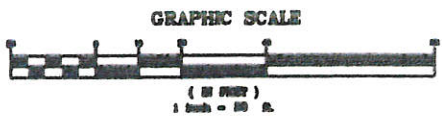
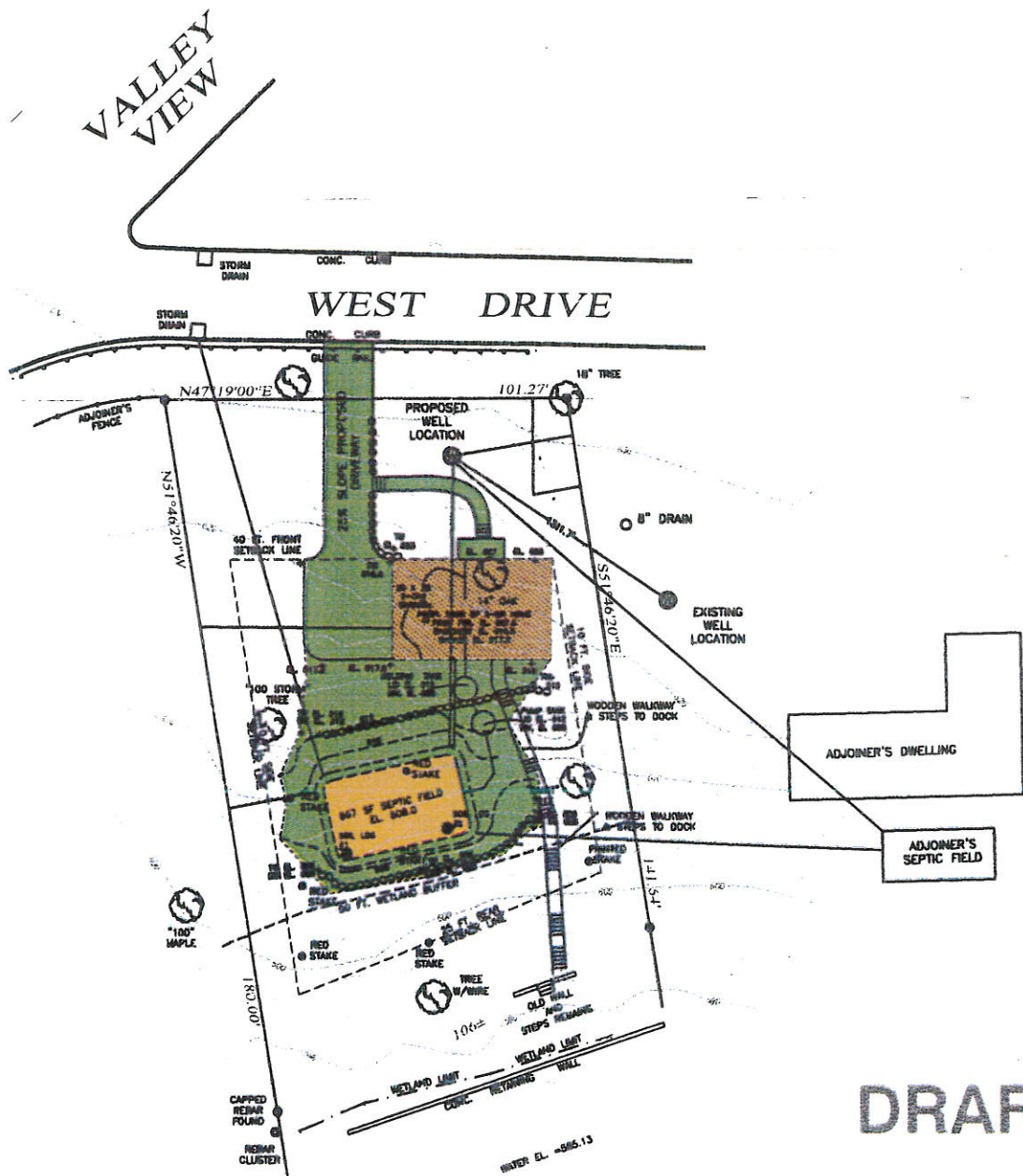
WEST DRIVE

DRAFT

DRAFT

AREAS OF DISTURBANCE

- BUILDING AND SEPTIC = 1,887 S.F.
- DRIVEWAY AND GRADING = 2,573 S.F.



DRAFT